

**LME Cash Metals Summary for week ending
16-June-2017**

AVERAGES

	US\$	NZ\$
Aluminium	\$ 1,874	\$ 2,597
Copper	\$ 5,677	\$ 7,865
Nickel	\$ 8,836	\$ 12,243
Zinc	\$ 2,482	\$ 3,439
Exchange Rate		\$ 0.7217

CHANGES, \$

	US\$	NZ\$
Aluminium	-\$ 29	-\$ 55
Copper	\$ 60	\$ 39
Nickel	\$ 22	-\$ 39
Zinc	\$ 17	\$ 4
Exchange Rate		\$ 0.0040

CHANGES, %

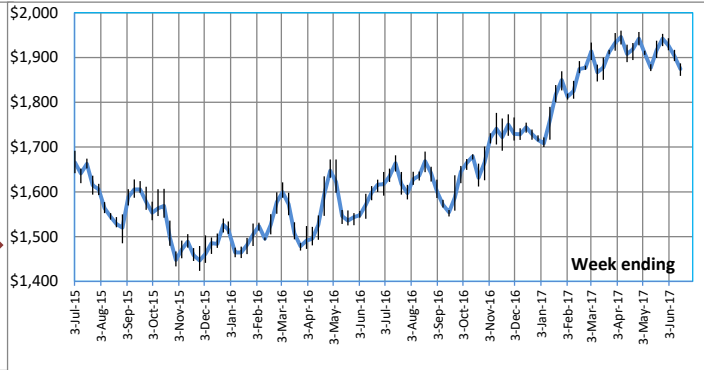
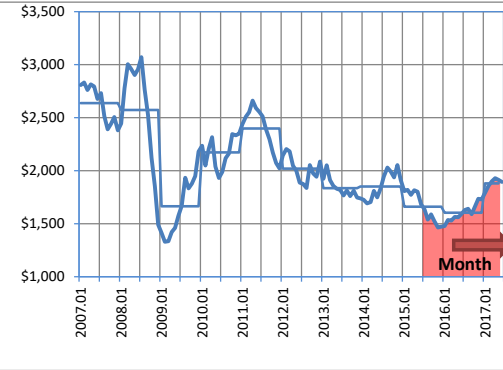
	US\$	NZ\$
Aluminium	-1.5%	-2.1%
Copper	1.1%	0.5%
Nickel	0.2%	-0.3%
Zinc	0.7%	0.1%
Exchange Rate		0.6%

LME Metals Prices - Cash

US\$/tonne

Updated to week ending 16-Jun-17

Aluminium



Averages

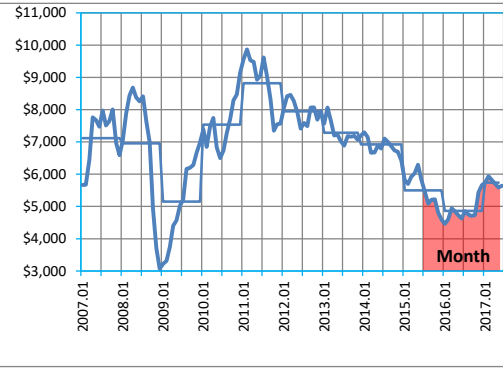
Last Week
\$1,903

This Week
\$1,874

Change
(\$29)
-2%

Week ending

Copper



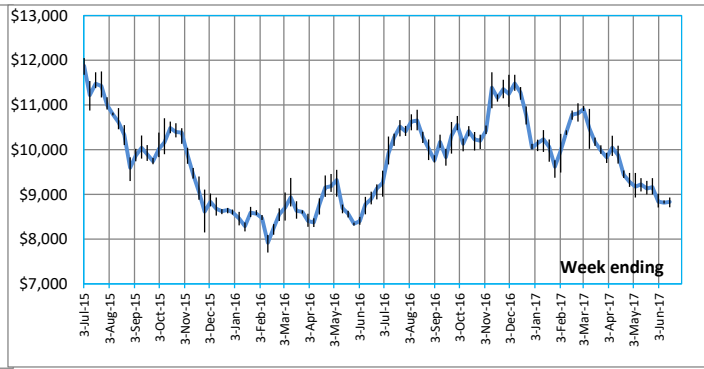
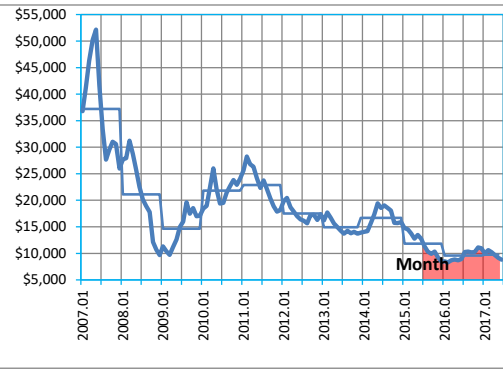
Last Week
\$5,617

This Week
\$5,677

Change
\$60
1%

Week ending

Nickel



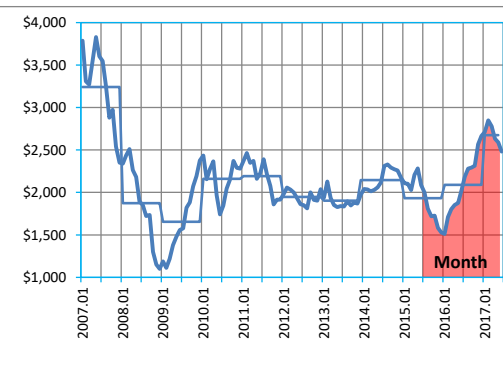
Last Week
\$8,814

This Week
\$8,836

Change
\$22
0%

Week ending

Zinc



Last Week
\$2,466

This Week
\$2,482

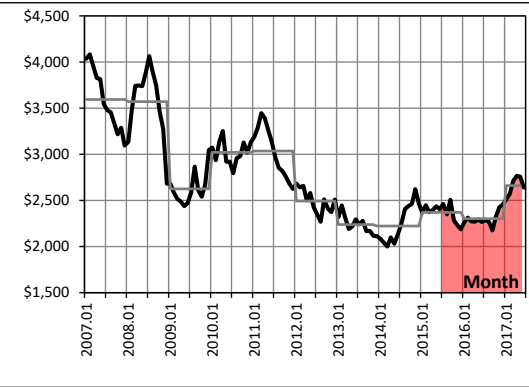
Change
\$17
1%

Week ending

Last month included in Month graph = May

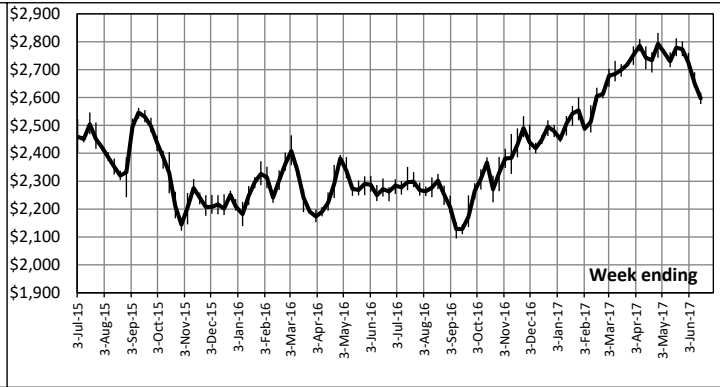
LME Metals Prices - Cash

NZ\$/tonne



Updated to week ending 16-Jun-17

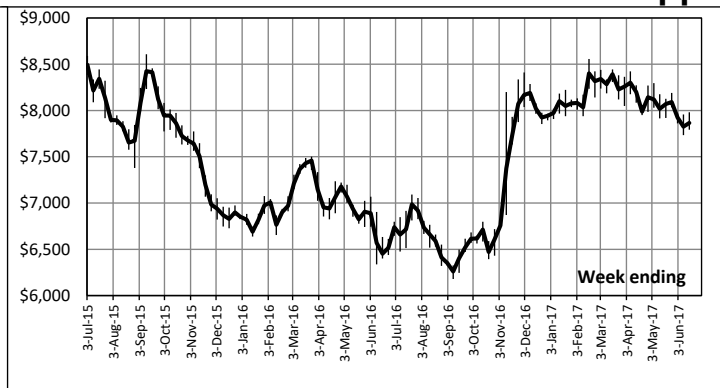
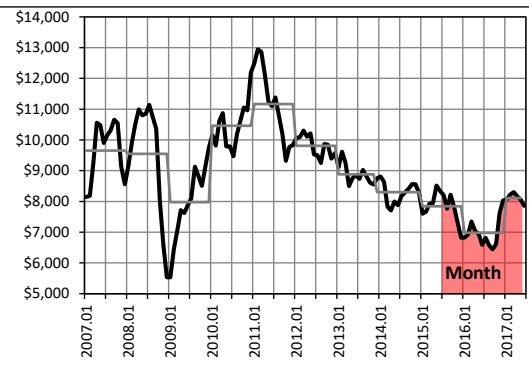
Aluminium



Averages

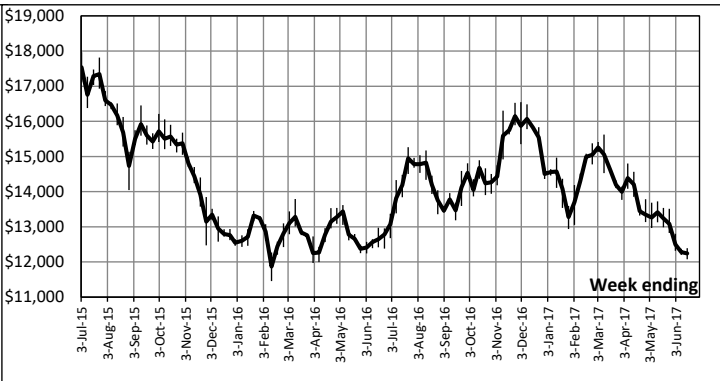
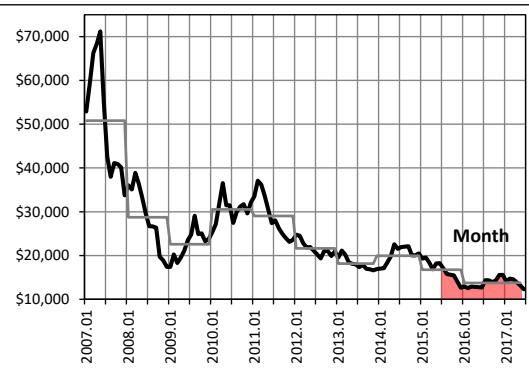
Last Week \$2,652
 This Week \$2,597
 Change (\$55) -2%

Copper



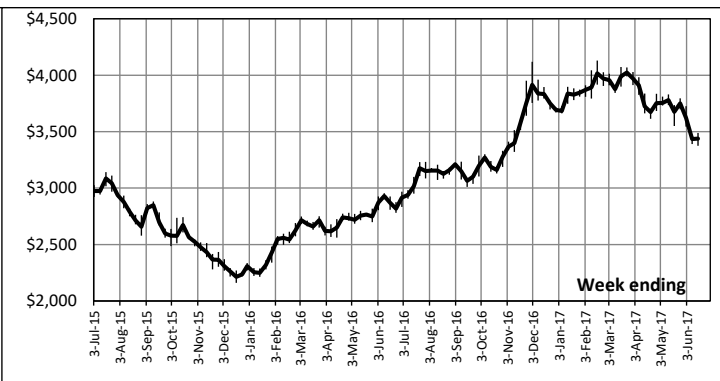
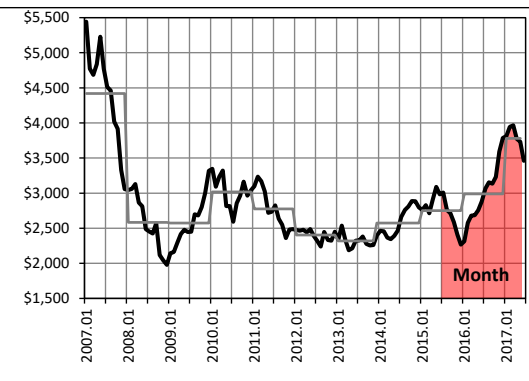
Last Week \$7,827
 This Week \$7,865
 Change \$39 0%

Nickel



Last Week \$12,281
 This Week \$12,243
 Change (\$39) 0%

Zinc

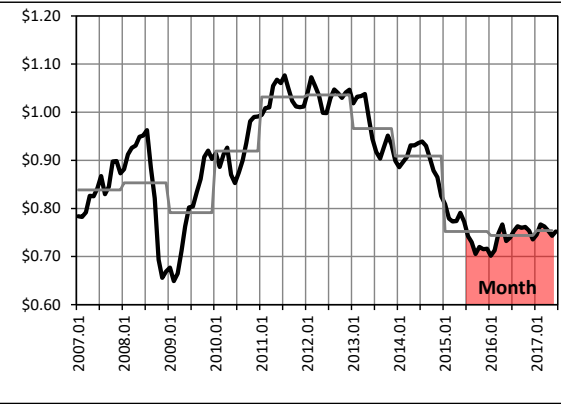


Last Week \$3,435
 This Week \$3,439
 Change \$4 0%

Last month included in Month graph = May

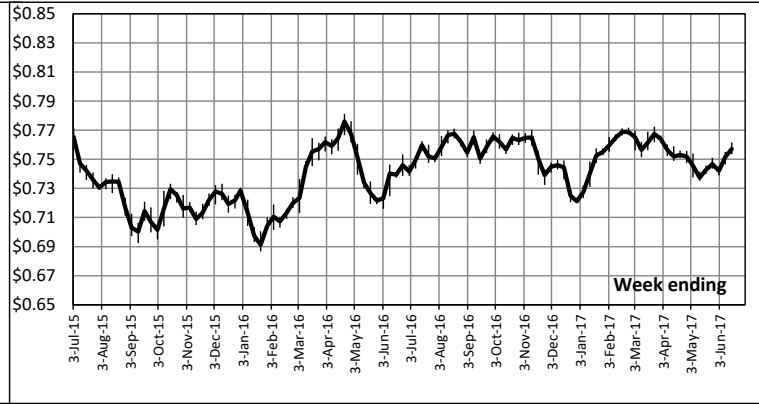
Exchange Rates

US\$ / AUD Exchange rate



Updated to week ending 16-Jun-17

Australian dollars



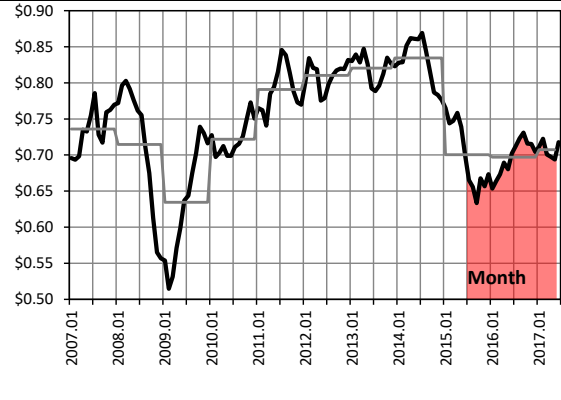
Averages

Last Week
\$0.7516

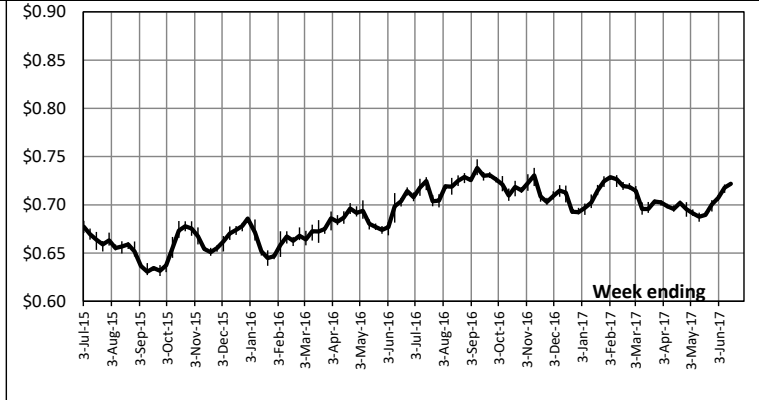
This Week
\$0.7570

Change
\$0.0054
1%

US\$ / NZD Exchange rate



New Zealand dollars



Last Week
\$0.7177

This Week
\$0.7217

Change
\$0.0040
0.56%

Last month included in Month graph = May